

JEFFERSON COUNTY PROPERTY VALUATION
ADMINISTRATOR
COLLEEN YOUNGER



You Have a Right to Appeal

T I P S H E E T

Step 1: Prepare your appeals package to support your opinion of value of your home.

You'll have the opportunity to upload your documentation during the online process or you can mail or hand deliver your documentation to the Jefferson County PVA's office after completing the online process. **Documentation is important.**

Helpful documentation includes:

Take a wide angle and close up photograph of each condition related issue in your home.

The goal is to show the whole room or facade where issues exist, then a close-up of the affected part of your home.

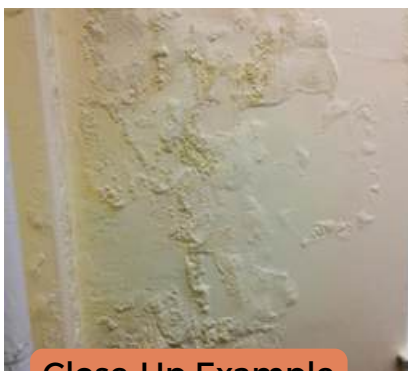
Wide-Angle Example



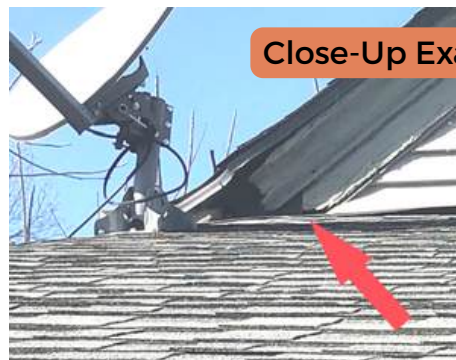
Wide-Angle Example



Close-Up Example



Close-Up Example



PHOTOS,
PHOTOS,
PHOTOS!

You Have a Right to Appeal **CONT.**

Interior issues include, but are not limited to:

- *Kitchens and/or bathrooms that are not updated*
- *An unfinished basement*
- *Plumbing issues*
- *Electrical issues*
- *Damage to ceilings and/or walls*

Paperwork to Include:

Documents that indicate a different value of your home, if you have any. For example:

- A recent appraisal of your home
- Estimates for needed repairs and/or deferred maintenance

Written Comments:

During the online process, you will be asked for comments supporting your opinion on the value of your house:

- Write an explanation of why the value of your home should be different than your assessment
- Include a description of each photo and as well as the paperwork you will submit as documentation and the reasons why they support a change in your assessed value

Step 2: Log on to www.jeffersonpva.ky.gov. Click on
PVA ONLINE CONFERENCE & APPEALS

Follow the instructions to complete the online process. If you did not upload your documentation - photos, paperwork and comments, you must either mail or hand deliver them within three business days to:

Jefferson County PVA

815 W Market St, Suite 400 Lou, KY 40202

502-574-6380

Step 3:

Office Hours: 8AM-4PM EDT